

## Instruction

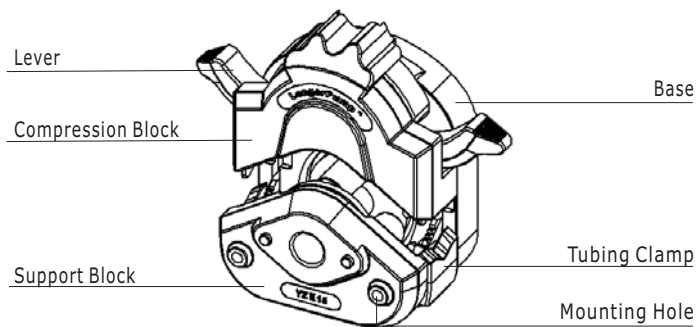
YZII series pump heads have good appearance and compact size. The tubing retention set is a linkage, it is convenient to load the tubing; Accept several tubing sizes for a wide flow range; The rollers adopt high quality materials and has good wearing property; The housing material is PESU. It has perfect rigidity and structure property. It is stable and autoclavable

### Features Table

Pump Head	Tubing	Speed (rpm)	Flow Rate (mL)
YZ II 15	13" 14" 19" 16" 25" 17" 18"	1 - 600	0.06 - 2280
YZ II 25	15" 24" 35" 36"		1.7 - 3000

Pump Head	Part Number		Roller Material	Housing Material	Weight (kg)
	Single Pump Head	Multiple Pump Heads			
YZ II 15	0101252	0101253	RULON <sup>®</sup> J	PESU	0.35
YZ II 25	0101262	0101263			

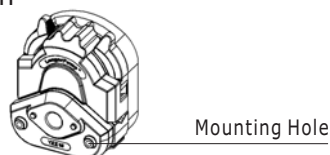
## Structure



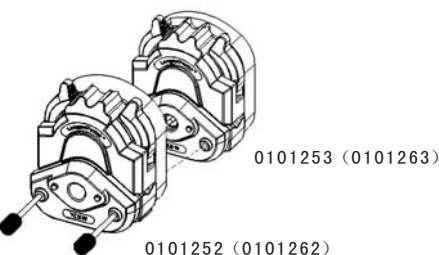
### Note

The material of pump head is not organic solvent resistant.

## Pump Head Installation



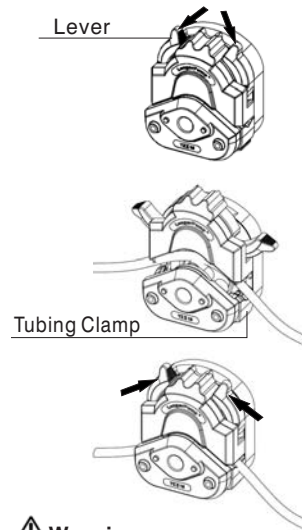
- Insert the two mounting screws into the mounting holes of the pump head. Insert the flat end of the pump head's shaft to the slot of drive's coupling. Then tighten the mounting screws to connecting hole of drive. Stack pump heads need 0101253 (0101263) pump heads and long mounting screws.



### Note

Try your best to tighten the two screws in the same degree. Do not over-tighten the screws to prevent the support block from deforming and noises during running.

## Tubing Loading



1. Pull the **Levers** according to the arrow head directions simultaneously and open the **Compression Block**.



### Prompt

The levers in both sides need to be pulled simultaneously.

2. The **Tubing Clamp** and the **Compression Block** is linkage. Tubing retention is automatic.

3. Pull the **Levers** according to the arrow head directions simultaneously and close the **Compression Block**.

### Warning:

Tubing must be checked and changed frequently, as tubing may be burst because of long time wear. The leaking fluid may result in the injury of operator or damage of the equipment.

## Maintenance

- When the pump is idle, we recommend you to release the tubing from pressure. This helps to protect the tubing from unnecessary strain and prolongs its service life
- Keep rollers clean and dry. This will prolong the service lives of tubing and pump head.
- The materials of pump head are not organic solvent and aggressive liquids resistant. Please pay attention when using.



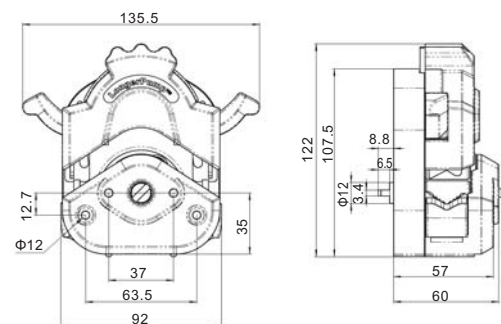
### Note

If a trouble happens, please contact us or our dealers.

## Warranty

The warranty period for this product is one year. If repair or adjustment is necessary within the warranty period, the problem will be corrected at no charge if it is not due to misuse or abuse on your part, as determined by the manufacturer. Repair costs outside the warranty period, or those resulting from product misuse or abuse, may be invoiced to you.

## Dimensions



Unit: mm